



# CAV Ag/CDV Ag Test Kit

Canine Adenovirus Ag/Canine Distemper Virus Ag Test Kit

AI18



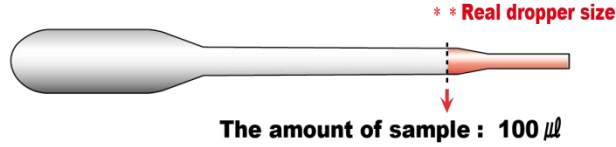
#B-305 Samsung Techno Valley, 140, Tongil-ro,  
Deogyang-gu, Goyang-si, Gyeonggi-do, 10594, Korea  
Tel. +82-2-2219-3459 Fax. +82-2-2219-3457  
Email. Leonardo@vetall.com

# CAV Ag/CDV Ag Test Kit

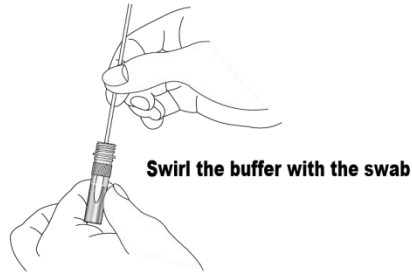
## Canine Adenovirus Ag/Canine Distemper Virus Ag Test Kit

<b>Catalog number</b>	AI18
<b>Summary</b>	Detection of specific antigens of CAV and CDV within 10 minutes
<b>Principle</b>	One-step immunochromatographic assay
<b>Detection Targets</b>	CAV antigens and CDV antigens
<b>Sample</b>	Canine ocular discharge and nasal discharge
<b>Reading time</b>	5 ~ 10 minutes
<b>Sensitivity</b>	CAV : 98.6 % vs. PCR, CDV : 98.6 % vs. RT-PCR
<b>Specificity</b>	CAV : 100.0 %. RT-PCR, CDV : 100.0 %. RT-PCR
<b>Quantity</b>	1 box (kit) = 10 devices (Individual packing)
<b>Contents</b>	Test kit, Buffer bottles, Disposable droppers, and Cotton swabs
<b>Storage</b>	Room Temperature (at 2 ~ 30°C)
<b>Expiration</b>	24 months after manufacturing
<b>Caution</b>	Use within 10 minutes after opening Use appropriate amount of sample (0.1 ml of a dropper) Use after 15~30 minutes at RT if they are stored under cold circumstances Consider the test results as invalid after 10 minutes

# Instruction for CAV Ag/CDV Ag test



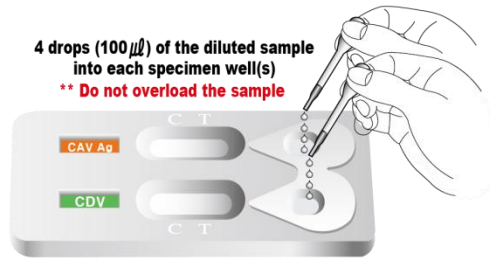
## 1 Sampling



## 2 Use the Supernatant layer



## 3 Loading



## 4 Reading

00:05:00~00:10:00



+



Read the result between 5~10 min

-



## 5 Discard

00:10:00



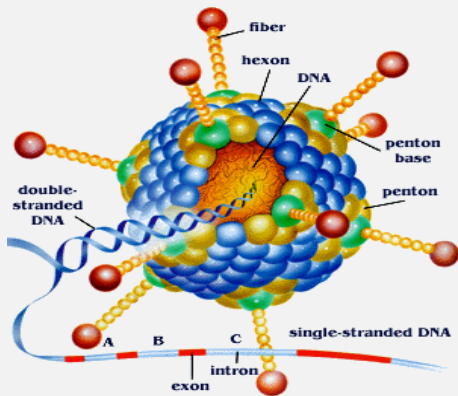
Discard the used device  
**In valid result after 10 min**



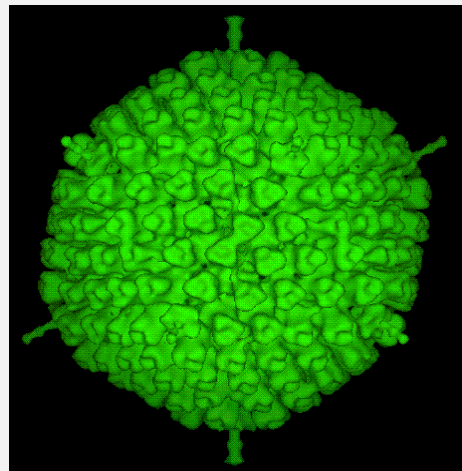
# Canine Adenovirus

## Information

Infectious canine hepatitis is an acute liver infection in dogs caused by canine adenovirus. The virus is spread in the feces, urine, blood, saliva, and nasal discharge of infected dogs. It is contracted through the mouth or nose, where it replicates in the tonsils. The virus then infects the liver and kidneys. The incubation period is 4 to 7 days.



Adenovirus



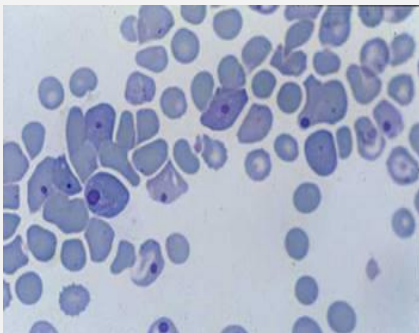
## Symptoms

Initially, the virus affects the tonsils and larynx causing a sore throat, coughing, and occasionally pneumonia. As it enters the bloodstream, it can affect the eyes, liver, and kidneys. The clear portion of the eyes, called the cornea, may appear cloudy or bluish. This is due to edema within the cell layers forming the cornea. The name 'hepatitis blue eye' has been used to describe eyes so affected. As the liver and kidneys fail, one may notice seizures, increased thirst, vomiting, and/or diarrhea.

# Canine Distemper

## Information

Canine distemper poses a severe threat to dogs, in particular puppies, which are severely exposed to the disease. When infected, their fatality rate reaches 80%. Adult dogs, though rarely, can be infected with the disease. Even cured dogs suffer from long-lasting harmful effects. The breakdown of the nervous system can aggravate the senses of smell, hearing, and sight. Partial or general paralysis can be easily triggered, and complications such as pneumonia can occur. However, canine distemper is not transmitted to human beings.



>> Inclusion bodies composed of virus nucleocapsids are dyed in blue with red and white cells.



>> Excessive formation of keratin and para-keratin on the sole of a foot devoid of hairs is shown.

# Canine Distemper

## Symptoms

Canine distemper is easily transmitted to other animals through viruses. The disease can occur through contact with the discharges of respiratory organs or urine and feces of infected puppies.

There are no specific symptoms of the disease, a main reason for the ignorance or delay of treatment. Common symptoms include a cold with high fever that could develop into bronchitis, pneumonia, gastritis, and enteritis. In early stage, squint, bloodshot eyes, and eye mucus are an indicator of the disease. Weight loss, sneeze, vomiting, and diarrhea are also easily examined. In late stage, viruses infiltrating the nervous system trigger partial or general paralysis and convulsion. Vitality and appetite can be lost. If the symptoms are not severe, the disease can deteriorate with no treatments. Low fever only can occur for two weeks. Treatment is hard after several symptoms including pneumonia and gastritis are shown. Even if the infection symptoms disappear, the nervous system may malfunction several weeks later. The rapid proliferation of viruses causes the formation of keratins on the sole of a foot. The fast examination of puppies suspected of suffering from the disease is recommended according to the various symptoms.

## Prevention and treatment

Puppies which recover from a virus infection are immune from it. However, it is very rare for the puppies to survive after being infected with the virus. Therefore, vaccination is the safest way.

Puppies born of dogs immune against canine distemper have immunity from it, too. The immunity can be obtained from milks of mother dogs during several days after birth, but it is different depending on the amount of antibodies that the mother dogs have. After that, the immunity of puppies decreases rapidly. For the appropriate time for vaccination, you should seek consultation with veterinarians.